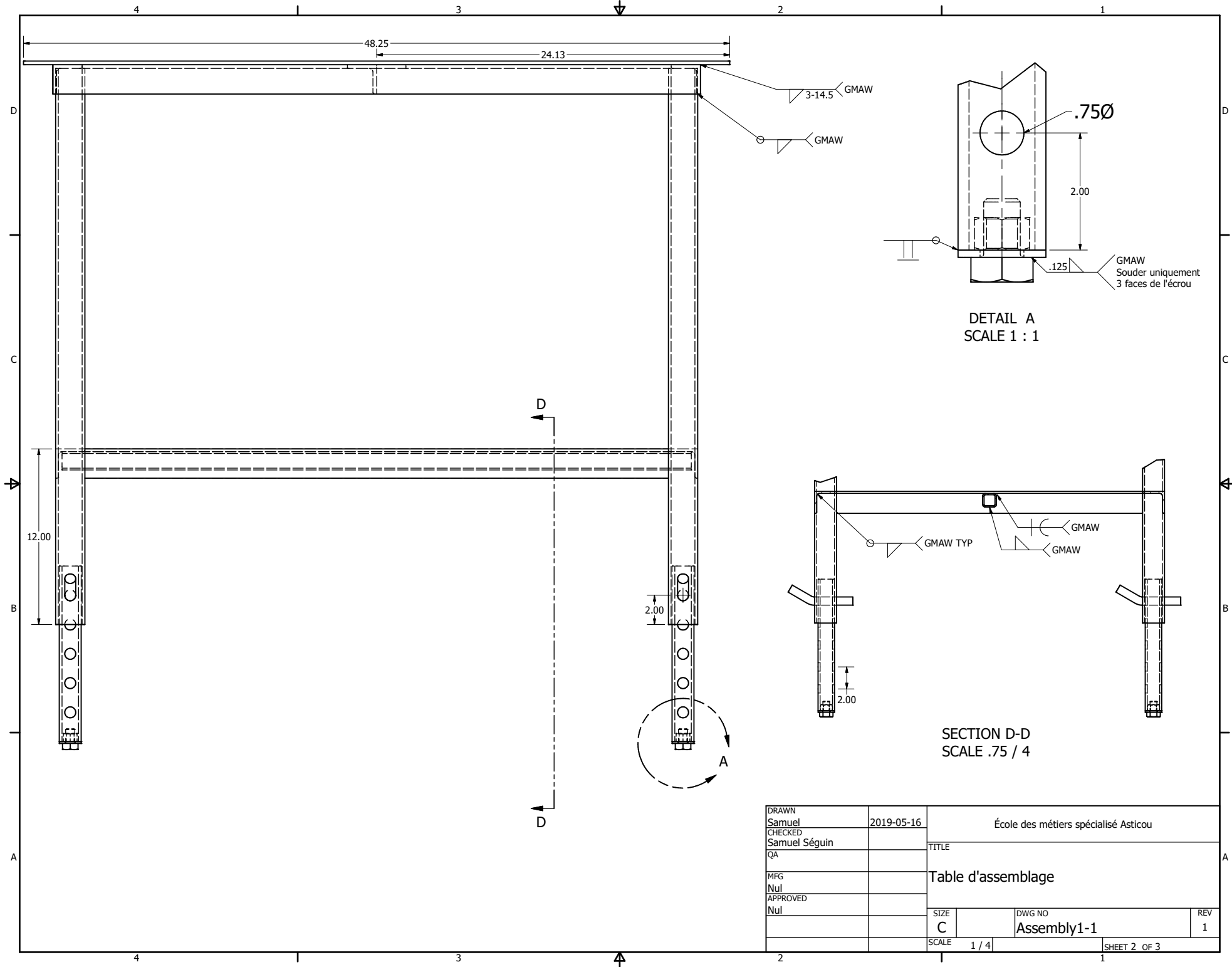


LISTE DE PIECES				
ITEM	QTY	PART NUMBER	DESCRIPTION	MASS
1	1	Plaque .25 x 36.25 x 48.25		124.007 lb
2	2	L 2 x 2 x 1/4 - 44,25	Angle Steel	11.332 lb
3	2	L 2 x 2 x 1/4 - 32,25	Angle Steel	8.328 lb
4	4	HSS - 2 x 2 x 3/16 - 38	Square tube	13.627 lb
5	2	L 2 x 2 x 3/16 - 27,87	Angle Steel	5.722 lb
6	2	L 2 x 2 x 1/8 - 39,87	Angle Steel	8.185 lb
7	1	HSS - (1 1/4x1 1/4x1/8) - 42,994	Square tube	6.368 lb
8	4	HSS - (1 1/2x1 1/2x3/16) - 12	Square tube	2.807 lb
9	4	Fer plat- 1 1/2x1 1/2 - ,125	Flat Bar Steel	0.062 lb
10	4	AS 2465 - 5/8 UNC	Unified hexagon bolts, screws and nuts (UNC and UNF threads)	0.085 lb
11	1	L 2 x 2 x 1/4 - 28,25	Angle Steel	7.569 lb
12	4	ANSI B18.2.1 - 5/8-11 UNC - 1	Heavy Hex Bolt	0.203 lb
13	4	ANSI/AISC Rolled Steel - 3/4-6	Round Bars	0.7517 lb

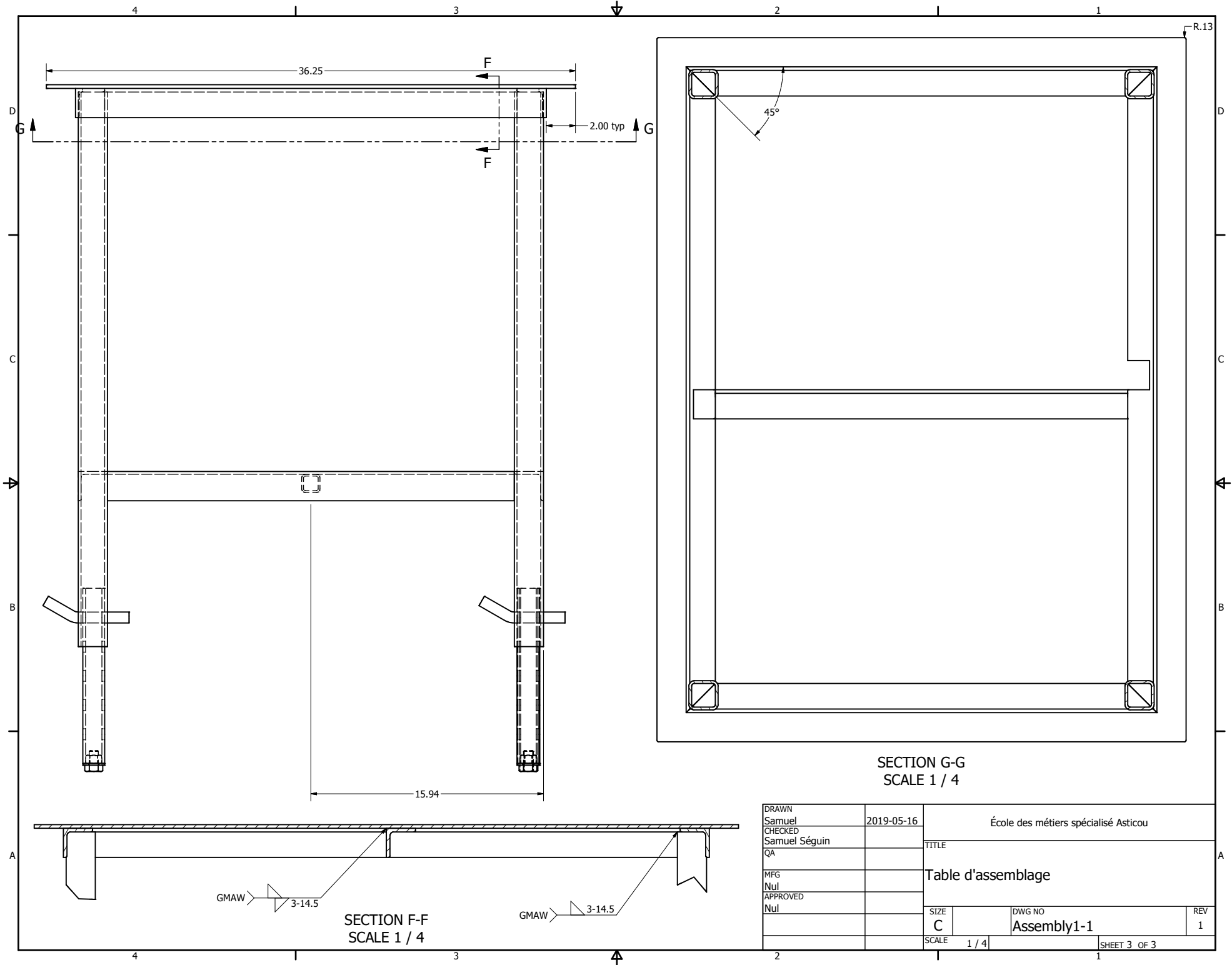
DRAWN Samuel	2019-05-16	École des métiers spécialisé Asticou		
CHECKED Samuel Séguin		TITLE		
QA		Table d'assemblage		
MFG Nul		SIZE C	DWG NO Assembly1-1	REV 1
APPROVED Nul		SCALE 0,17 : 1	SHEET 1 OF 3	



DETAIL A
SCALE 1 : 1

SECTION D-D
SCALE .75 / 4

DRAWN Samuel	2019-05-16	École des métiers spécialisé Asticou	
CHECKED Samuel Séguin		TITLE	
QA		Table d'assemblage	
MFG Nul		SIZE C	DWG NO Assembly1-1
APPROVED Nul		SCALE 1 / 4	REV 1
		SHEET 2 OF 3	



DRAWN Samuel	2019-05-16	École des métiers spécialisé Asticou	
CHECKED Samuel Séguin		TITLE	
QA		Table d'assemblage	
MFG Nul		SIZE C	DWG NO Assembly1-1
APPROVED Nul		SCALE 1 / 4	REV 1
		SHEET 3 OF 3	